

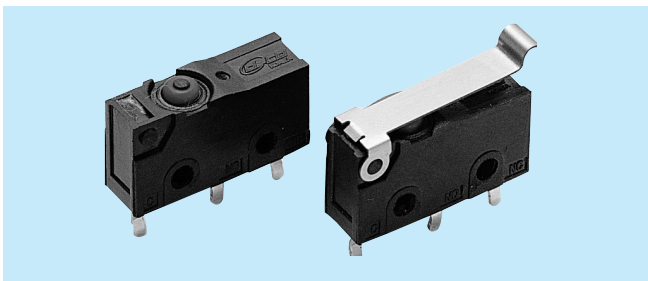
**FEATURES**

- New Additions: In-line Terminal Types
- Flux-resistant Construction With Integrally Modeled Terminal
- Solder Terminal, PC Board Terminal, .110 Terminals For Easy Mounting
- UL/ CSA/ VDE Approved & Be In Progress

**APPLICATION**

- Communication Equipments
- Vending Machines
- Home Appliances
- Security Systems
- Data Systems
- Medical Equipments
- Cassette Tape Recorders
- VCR

**Sealed Type Micro Switch**



**FEATURES**

- Waterproof : IP67(30 Min./1m Water Depth)
- High Reliability:Highly reliable contactor
- Long Life:Standard 100,000cycle (Real:200,000cycle)

**APPLICATION**

- Ideal for automobiles, automatics, refrigerators, ice-making equipment, which require high environmental resistance.

**MODELING INFORMATION**

**Ex DS C2 P 3 0 2 - X**

Seris Code	Terminal Type	IP CLASS	Current Rating	Lever Type	Operating	Option
"S" Type Micro Switch	Cross-Line terminal type A:Solder Terminal B:PCB Terminal C:110 Terminal	표기없음: IP 30 이하	1:0.1A 3:3A 5:5A	0:Without Lever 1:Short Lever 2:Normal Lever 3:Long Lever 4:Normal Roller Lever 5:Simulator Lever	0:Max. 50g 1:Max. 100g 2:Max. 150g  (None Lever)	Earth Terminal SPST The other Lever Color etc.
	In-Line terminal type A2:Solder Terminal B2:PCB Terminal C2:110 Terminal	P: IP67 이상				

**Terminal Type**

TYPE	Cross-Line terminal type	In-Line terminal type	PC board terminal	Solder terminal	.110 terminal
DIMENSION					

**MODEL LISTS**

Type	Rating	O.F(max.) of Pin plunger			Terminal					
		50g	100g	150g	Cross-Line terminal type			In-Line terminal type		
					Solder	P.C.B	.110 Tab	Solder	P.C.B	.110 Tab
DSA Type	3A 250VAC		○	●	●	●	●			
	5A 250VAC		○	●	●	●	●			
DSX2 Type	0.1A 30VDC	○	●	●				●	●	●
	3A 250VAC	○	●	●				●	●	●
DSX2 Type	0.1A 30VDC	○	○	●				○	●	○

**SPECIFICATIONS**

**Electrical Ratings**

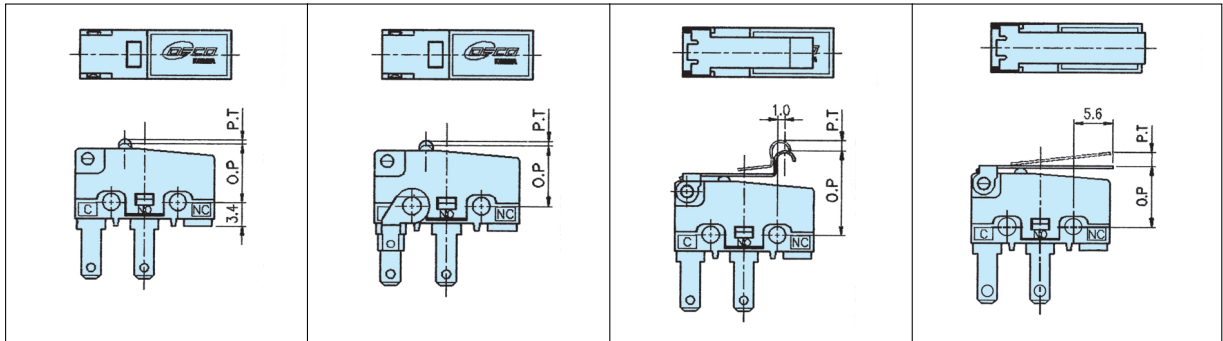
Voltage	Model	DSX1XX	DSX3XX	DSX5XX
		Resistive Load(cos φ=1)	Resistive Load(cos φ=1)	Resistive Load(cos φ=1)
250V AC		0.1A	3A	5A
30V DC		0.1A	3A	5A
125V DC		-	0.4A	0.4A

**Characteristics**

	DSX1XX	DSX3XX	DSX5XX
Insulation resistance	Min. 100M Ω(at 500V DC)		
Contact resistance(Initial)	Max. 100m Ω	Max. 50m Ω	Max. 50m Ω
	(by voltage drop, 1A 6 to 8V DC)		
Electrical life at rated load(O.T max.)	10 <sup>5</sup> at 20 cpm	5 × 10 <sup>4</sup> at 20 cpm	5 × 10 <sup>4</sup> at 20 cpm
Mechanical life	5 × 10 <sup>5</sup> at 60 cpm	5 × 10 <sup>5</sup> at 60 cpm	5 × 10 <sup>5</sup> at 60 cpm
Dielectric strength	1000 Vrms for 1 min		
	Between terminals		
	Between terminals and other exposed metal parts	1500 Vrms for 1 min	
Between terminals and ground	1500 Vrms for 1 min		
Temperature rise	30 DEG max		
Terminal strength	6kg fulling and push torque shall be applied for 1 min		
Shock resistance(Without lever)	Min. 30 G (O.F. 100g, 150g)	(Contact opening: max. 1 msec.)	
	Min. 15G (O.F. 50g)		
Vibration resistance(Without lever)	9 G, 10 to 55 Hz at double amplitude of 1.5mm(Contact opening : max. 1 msec)		
Ambient temperature	-25 °C to +85 °C		
Ambient humidity	Max. 85% R. H		
Allowable operating speed	0.1 to 1,000 mm/sec		
Mechanical reperatability	300 cpm		



Kinds of Terminal & Lever



DSXX Type (Standard)

LEVER TYPE	Without lever	Short lever	Normal lever
DIMENSION			
LEVER TYPE	Long lever	Normal roller lever	Simulator lever
DIMENSION			

DSX2P Type (Standard)

LEVER & TERMINAL - TYPE(N/S)(동일형상은 동일 치수임)				