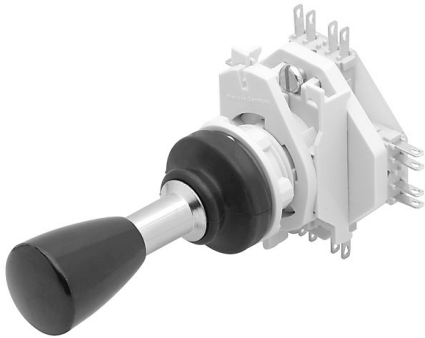


EAO – Your Expert Partner for Human Machine Interfaces

44-800.8 - Lever switch complete

44-800.8 - Lever switch complete



Attention: The preview is based on a sample product. This can differ from your current configuration.

Mounting

Mounting cut-out Ø 22.5 mm
Design raised

Front

Front shape round
Front dimension Ø 22 mm

Other Attributes

Weight 0.085 kg

Operating-/Indication part

Lever colour black
Lever material Plastic

IP-Rating

Front protection IP 65

Connection Method

Terminal Solder 2.8 x 0.5 mm

Actuator

Switching action Momentary

Switching element

Switching voltage 250 V AC
Switching current 5 A
Contacts 4 NC + 4 NO
Switching system Snap-action switching element
Contact material Gold

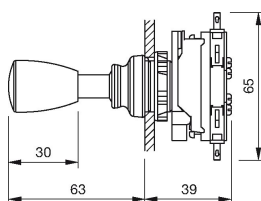
Function

Lever switch

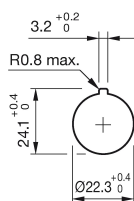
EAO – Your Expert Partner for Human Machine Interfaces

44-800.8 - Lever switch complete

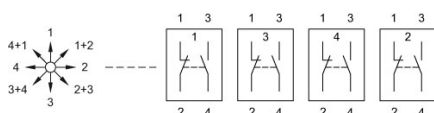
Dimensions



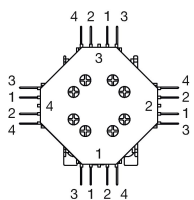
Mounting cut-outs



Wiring diagram



Component layout



Additional information

8 positions without latch position and lever guidance (omni directional)

With flat receptacle, VDE 0630 (SEV) specify use of insulating sleeve Part No. 280-0010-00

Legend

Contacts: NC = Normally closed, NO = Normally open

Switching action: B = Momentary